

THE WIT

An Underwater Adventure

Old molasses chambers

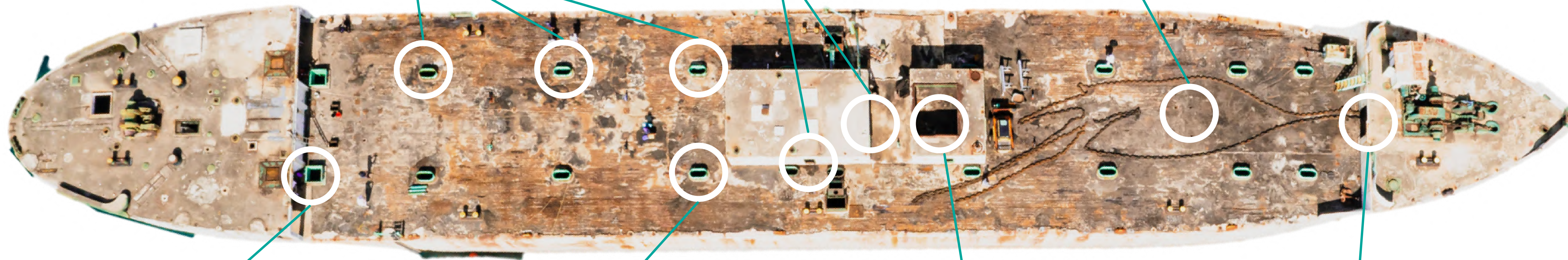
- Depth: 70 ft up to 55 ft
- Fullydark, oil residuals
- Flash light compulsory
- Difficult access
- Interest: +

Valves and machine room

- Depth: 70 ft up to 45 ft
- 2 Levels
- Nice daylight effects
- Flash light not compulsory
- Interest: ++

Small Ventholes

- Depth: 50 ft
- ideal for photos



Command Room

- Depth: 60 ft up to 40 ft
- Command room, machine room, toilets
- A mix of daylight and dark spaces
- Flashlight compulsory only for limited rooms
- Relative easy access (2 entrances)
- Interest: +++

Old Molasses Chamber

- Depth: 60 ft up to 50 ft
- Old molasses chamber
- Hole in the hull allowing discovery of the other side of the ship
- Communicates with another chamber
- Flashlight compulsory
- Difficult access
- Interest: +++

Working Rooms

- Depth: 60 ft
- 1 Level, working rooms
- Daylight
- Flash light not compulsory
- Interest: ++

Anchor Chain Entrance

- Depth: 70 ft up to 45 ft
- 3 Levels, several rooms, anchor chains
- Nice daylight effects through portholes
- Air pocket
- Flashlight not compulsory
- Relative easy access
- Interest: +++

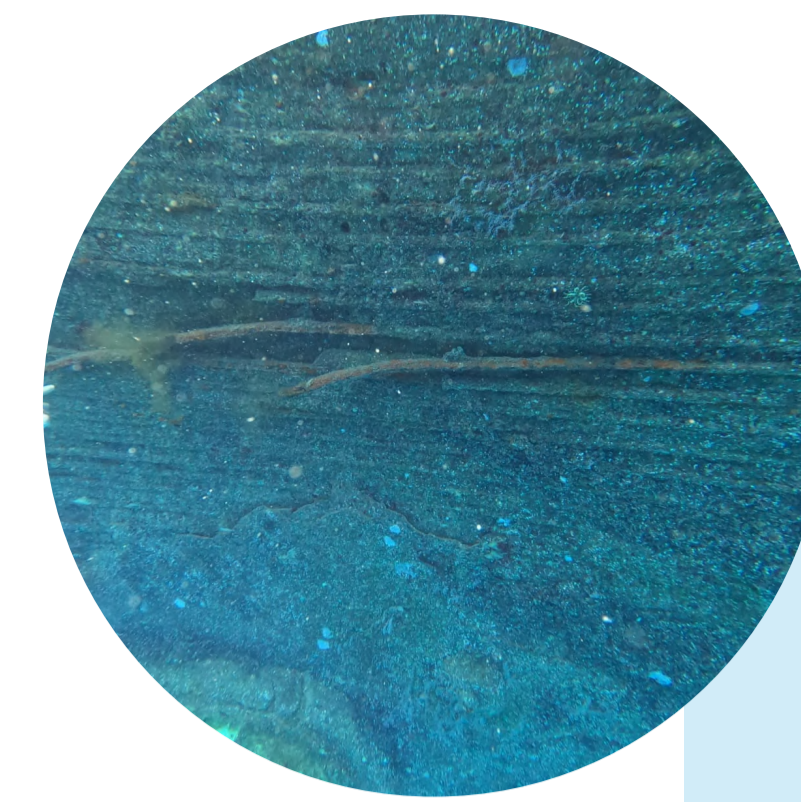


Concrete Slabs

Thin layers of concrete are eroding from the top of the stern. Keep clear of the lower areas of the ship below this section.

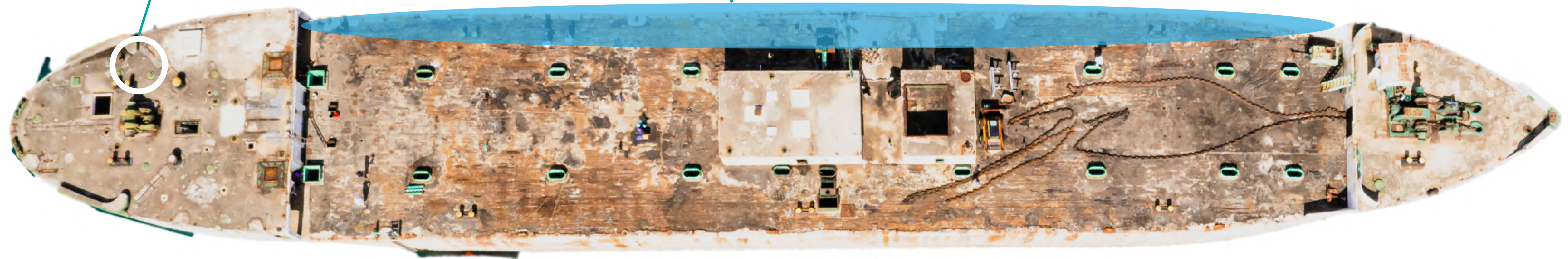
Crumbling Top Section

The top 3rd of the ship has sections of concrete that are susceptible to erosion in the current. It is advised to keep your divers 15ft away from the ship at all depths.



Exposed Rebar

As the concrete flakes off, the rebar below is exposed. Some rebar (in the top 10ft of the ship) is pointed and sharp. Take care that your divers do not swim past these, especially on days with surge.



Ship Settling

Since this wreck is relatively new, the ship is still settling. Be aware that movement could happen at any time and avoid diving underneath the ship.

Surge and Current

Be aware that the top of the ship sits in shallow water, less than 10ft at a low tide. Do not let your divers stray too close to the surface, especially on choppy days. The current can also be strong, so choose your mooring wisely.

THE WIT

Safety and Hazards

The Wit is a fantastic dive for guests of all levels, but it is an old ship that was sunk recently, so be aware of the hazards. Wreck diving is inherently dangerous and you do so at your own risk